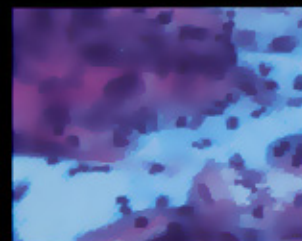


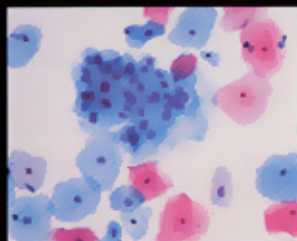
ThinPrep[®]

is *more effective*
than *any* other
Pap test *available.*

The choice is yours...



CONVENTIONAL
SMEAR



THINPREP
PAP TEST

...the answer is clear.

APMG is the longest standing independent pathology practice in Silicon Valley.

Our group consists of eight pathologists at two practice sites: Los Gatos and Santa Cruz, serving physicians throughout California.

Our pathologists are outpatient and inpatient specialists that produce accurate, diagnostic reports within 24 hours in most instances. Abnormal cases are routinely peer-reviewed.

Our state-of-the-art, CAP-certified histopathology laboratory produces over 100,000 high-quality slides for microscopic examination each year. We offer an extensive menu of special immunohistochemical and special stains.

- **Friendly courier service** picks up specimens, and returns results, at your convenience.
- **Photomicrographs** on diagnosed tissue available.
- Extensive managed care, and preferred provider, **contracts with national and local insurance carriers.** Special accommodations available for uninsured patients.
- **Information technology** capabilities allow us to provide pathology reports via auto-fax, remote printing, and direct interface to practice management systems.



**Associated Pathology
Medical Group, Inc.**

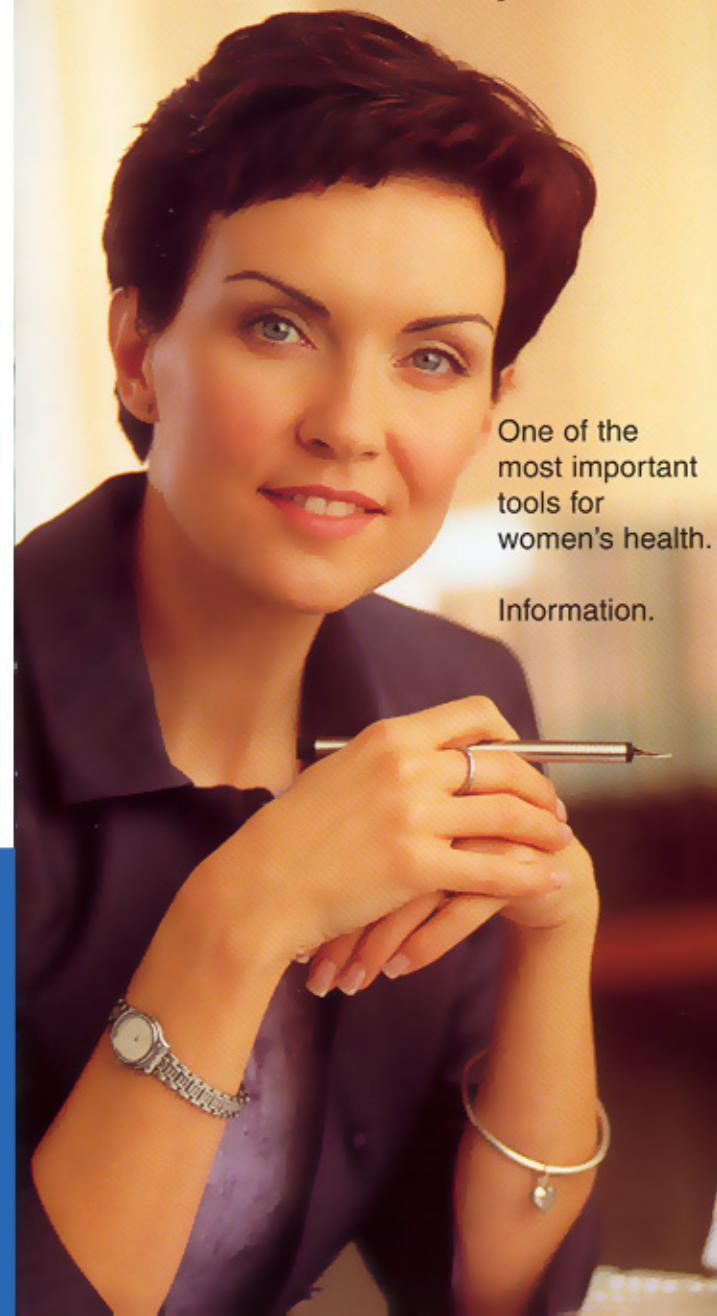
105A Cooper Court
Los Gatos, CA 95030

800.848.2764

FAX (408) 395-0471
www.apmglab.com

ThinPrep[®] Pap Test[™]

A more effective Pap test



One of the
most important
tools for
women's health.

Information.

Knowledge is power.



Q: How is the ThinPrep® Pap Test™ different from the conventional Pap smear?

A: In a conventional Pap smear, cells are scraped from the cervix and smeared directly onto a slide in the physician's office. With a ThinPrep Pap Test, the cells are obtained in the usual manner but are then placed directly into a collection vial containing a fluid preservative. This new method allows more of your cells to be sent to the laboratory, where state-of-the-art equipment optimizes preparation quality. In the laboratory the ThinPrep processor separates the cells from unnecessary material, such as blood and mucus. The cells are transferred onto a slide in a uniform, thin layer that makes it easier to interpret.

Q: Why should you ask for the ThinPrep Pap Test?

A: Because it may save your life! The ThinPrep Pap Test is the first improvement to the Pap smear in 50 years. Your doctor will obtain cells from your cervix during your gynecologic examination in the usual manner. The difference is in the way the cells are collected, preserved and processed in the laboratory. This enables the laboratory to process a higher-quality slide for interpretation, providing you with a more accurate result.

Q: Can you request the ThinPrep Pap Test as part of your routine checkup?

A: Yes. Just check with your doctor's office in advance so that the appropriate collection materials will be available.

Q: What if your test results indicate you may have a problem?

A: Just as with a conventional Pap smear, the majority of ThinPrep Pap Test results are normal. If a problem is detected, however, your doctor will determine the best treatment or follow-up plan for you. It is important to remember, that if detected early, cervical cancer is almost 100% curable! That's why it's important to have an annual pelvic examination, including a ThinPrep Pap Test.

Q: Is there proof that the ThinPrep Pap Test is more effective?

A: Studies involving thousands of women have indicated that the ThinPrep Pap Test increases the detection of precancerous cells. In a recent study the ThinPrep Pap Test was credited with more than doubling the detection rate of precancerous conditions, as compared with the conventional Pap smear.*

Q: Will my insurance pay for the ThinPrep Pap Test?

A: Many insurance carriers, such as Prudential, Cigna, United Healthcare, Aetna and Blue Cross Blue Shield, have added full coverage for the ThinPrep Pap Test to their benefits package. Although many insurers do cover the ThinPrep Pap Test, healthcare plans vary across the country. Check with your insurer to verify coverage.



*Associated Pathology
Medical Group, Inc.*